

## INTRODUCTION

---

In January 2016, the 4.5-star Pagoda Resort & Spa, located overlooking Perth's famous Swan River announced the completion of its multi million-dollar refurbishment program which incorporated its accommodation rooms, lobby, restaurant, conference facilities and adjoining public areas. The refurbishment encompassed a total remodelling of its 101 guest rooms and apartments and the introduction of new luxury suite accommodation.

Guided by the design of Narada Hotel Groups Internationally recognised brand the guest room refurbishment encompasses a tranquil palette of deep wood textures and neutral tones designed to bring a high level of sophistication and elegance to truly exceed traveller's expectations. With the installation of the latest technology including USB charging, free high-speed Wi-Fi and minimum 32-inch LCD TV's in addition to the specially designed Narada Dream King Beds, guests of the Pagoda Resort & Spa are made to feel truly at home.

For the seasoned traveller the newly implemented Pagoda Suite accommodation is certain to impress with elegant seating area, balcony, en-suite bathroom with spa bath, Nespresso coffee and complimentary mini-bar.

The new look guest lobby has been inspired by Asian culture, with elegant water fountain and stone feature wall with hued lighting, creating a warm yet tropical feel.

Whether travelling for business or leisure the Pagoda Resort & Spa provides a host of facilities including six refurbished function and event spaces, restaurant & bar with alfresco dining, heated pool, fitness centre and sauna.

For a distinctively exceptional experience, the Pagoda Resort & Spa is an ideal accommodation and venue choice when visiting Perth.





#### **SUPERIOR ROOM**

- 29sqm room
- 1 King bed / Twin (Split King Singles)
- Max 2 persons
- Corner spa bath
- LCD TV, Free Wi-Fi & Mini-Bar
- Some with balcony or river views, on request & subject to availability



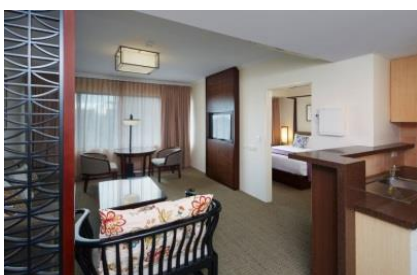
#### **DELUXE ROOM**

- 36sqm room
- 1 King bed / Twin (Split King Singles)
- Max 3 persons
- Corner spa bath
- LCD TV, Free Wi-Fi & Mini-Bar
- Most with balcony, on request & subject to availability



#### **PAGODA SUITE**

- 44sqm room
- 1 King bed
- Max 3 persons
- Some with corner spa bath, on request & subject to availability
- LCD TV, Free Wi-Fi & Mini-bar
- Washing machine & dryer
- Living area with lounge, dining table & chairs
- Nespresso machine
- Some with balcony, on request & subject to availability



#### **ONE BEDROOM APARTMENT**

- 44sqm room
- 1 King bed
- Max 3 persons
- Corner spa bath
- Living area with lounge, dining table & chairs
- 2 LCD TVs, Free Wi-Fi & Mini-bar
- Fully equipped kitchen with oven, microwave, dishwasher
- Washing machine & dryer
- None with balcony



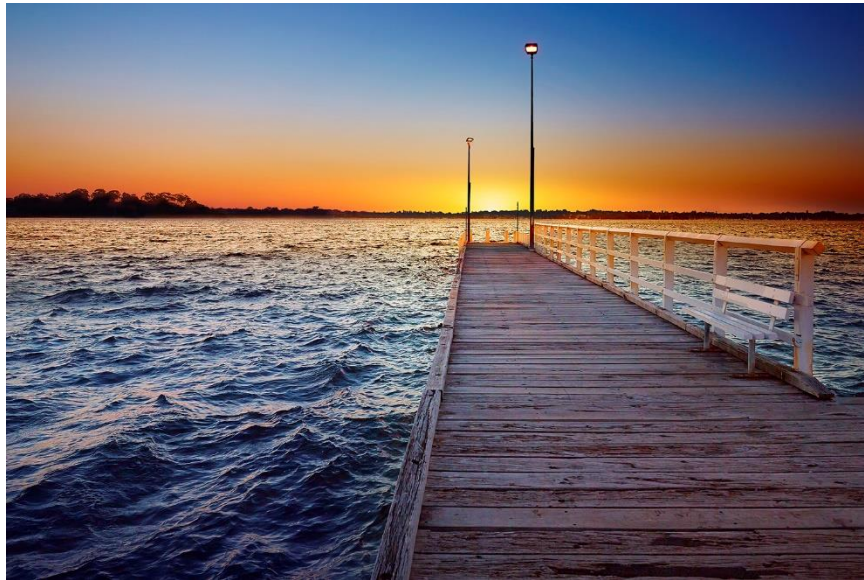
## TWO BEDROOM APARTMENT

- 73sqm room
- 2 Bedroom 2 Bathroom (2 kings or 1 king & 1 twin or 2 twins)
- Max 5 persons
- Corner spa bath
- Living area with lounge, dining table & chairs
- 3 LCD TVs, Free Wi-Fi & Mini-bar
- Fully equipped kitchen with oven, microwave, dishwasher
- Washing machine & dryer
- Some with park, river or balcony views, on request & subject to availability

### Contact:

Ms. Jocelyn Thien  
Director of Sales & Marketing  
[Jocelyn.Thien@pagoda.com.au](mailto:Jocelyn.Thien@pagoda.com.au)  
Tel: +618 9367 0300

Mr. Peow Lim  
General Manager  
[peow.lim@pagoda.com.au](mailto:peow.lim@pagoda.com.au)  
Tel: +618 9367 0300



112 Melville Parade Como WA | P: +61 8 9367 0300 | [www.pagoda.com.au](http://www.pagoda.com.au)